

F U S E

lighting



DIANA CHANDELIER

5056

OIL RUBBED BRONZE WITH SILVERSTONE MICA AND AMBER MICA DOTS

DIANA CHANDELIER

CHANDELIER

5056

HEIGHT: 18" (45.7 CM)

WIDTH: 40" (101.6 CM)

DEPTH: 20" (50.8 CM)

STEMS: 24" (61.0 CM)

OA: 42" (106.7 CM)

CEILING CANOPY: 22"W X 6"D
(55.9 W X 12.2 D)

WEIGHT: APPROX. 40 LBS.

WIRING: 8 CANDELABRA-BASE
SOCKETS, 60 WATT MAX. EACH

RECOMMENDED BULB:
CLEAR CA-8

METAL FINISHES

BRUSHED BRASS

LIGHT ANTIQUE BRASS

DARK ANTIQUE BRASS

POLISHED BRASS

POLISHED NICKEL

SATIN NICKEL

OIL RUBBED BRONZE

GLOSS WHITE POWDER COAT

MATTE BLACK POWDER COAT

PATINATED STEEL

OPTIONS

AMBER MICA

MOSS MICA

REDWOOD MICA

SILVERSTONE MICA

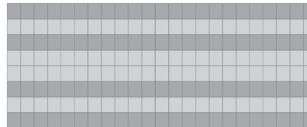
CAPIZ SQUARES (10% UPCHARGE)

METAL SQUARES (50% UPCHARGE)

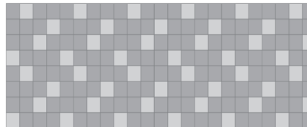
MICA COLORS & PATTERNS



ONE SOLID COLOR

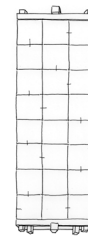


COLOR #1 WITH COLOR #2 STRIPE



COLOR #1 WITH COLOR #2 DOTS

AVAILABLE WITH ONE SOLID COLOR
OF MICA OR A COMBINATION OF TWO
MICA COLORS IN THE ABOVE PATTERNS.
PLEASE INQUIRE FOR CUSTOM PATTERNS.



SCONCE
9056

fuselighting.com

© 2000-2018 FUSE LIGHTING.
ALL RIGHTS RESERVED.