

F U S E

lighting



DIANA SCENCE
9056

LIGHT ANTIQUE BRASS WITH SILVERSTONE MICA

DIANA SCONCE

9056

HEIGHT: 17 3/4" (45.1 CM)

WIDTH: 6" (15.2 CM)

PROJECTION: 4 1/8" (10.5 CM)

BACKPLATE: 17" H X 5" W
(43.2 H X 12.7 W)

WIRING: 1 MEDIUM-BASE SOCKET, 60
WATT MAX.

RECOMMENDED BULB: CLEAR T-10

J-BOX LOCATION: 7" (17.8) FROM TOP
OF FIXTURE

ADA COMPLIANT UPON REQUEST

METAL FINISHES

BRUSHED BRASS

LIGHT ANTIQUE BRASS

DARK ANTIQUE BRASS

POLISHED BRASS

POLISHED NICKEL

SATIN NICKEL

OIL RUBBED BRONZE

GLOSS WHITE POWDER COAT

MATTE BLACK POWDER COAT

PATINATED STEEL

OPTIONS

AMBER MICA

MOSS MICA

REDWOOD MICA

SILVERSTONE MICA

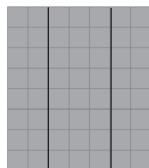
CAPIZ SQUARES (10% UPCHARGE)

METAL SQUARES (50% UPCHARGE)

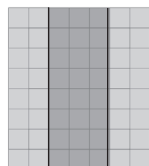
PLEASE INQUIRE FOR CUSTOM
OPTIONS.

MICA COLORS AND PATTERNS

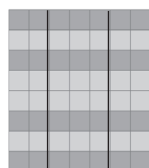
SOLID COLOR #1



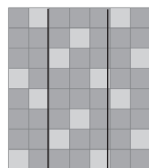
COLOR #1 FRONT COLOR #2 SIDES



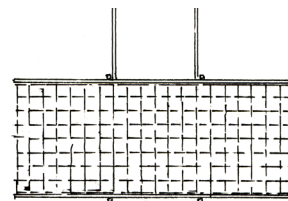
COLOR # 1 COLOR #2 STRIPE



COLOR #1 COLOR # 2 DOTS



SCONCES ARE AVAILABLE WITH
ONE SOLID COLOR OF MICA OR A
COMBINATION OF TWO MICA COLORS
IN THE ABOVE PATTERNS. PLEASE
INQUIRE FOR CUSTOM PATTERNS.



CHANDELIER
5056

fuselighting.com

© 2000-2018 FUSE LIGHTING.
ALL RIGHTS RESERVED.